

JAN. 12 - MAR. 29

WINTER 2012 *she studies*

*Join us for another exciting semester of She Studies
as we explore the book of Ruth!*

.....

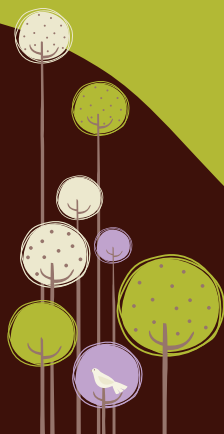
Delve into the noble character of Ruth, her unique relationship with her mother-in-law, and her blossoming love with Boaz and see how her story speaks into our lives today. If you've been devastated by loss, struggled as a stranger, longed to be loved, or wept along the way, you'll find a place with Ruth.

This twelve week relational Bible study—based on Kelly Minter's Living Room Series, *Ruth: Loss, Love and Legacy*—will incorporate live teaching, workbook study, small group sharing, personal stories, interactive creative elements and more as we aim to merge God's word into our everyday lives. All women are welcome.

Childcare offered morning only. All children must be pre-registered. Cost for childcare: \$5 per child per week for 1st child, \$3 each additional child, \$10 max.

Cost for study \$10 Registration
\$20 for Book and Registration

Register online, at the booth,
or call Elena at 717-653-6266



she
community

Thursday Mornings & Evenings, Third Floor
9:30 AM-11:30 AM & 7:00 PM-8:45 PM